

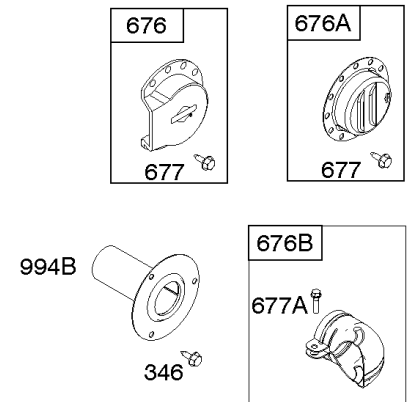
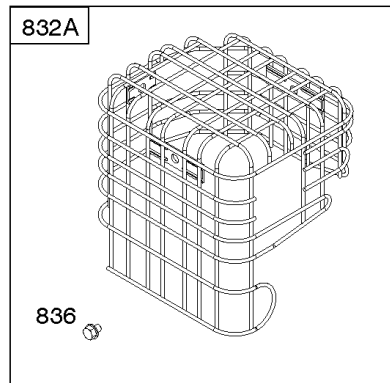
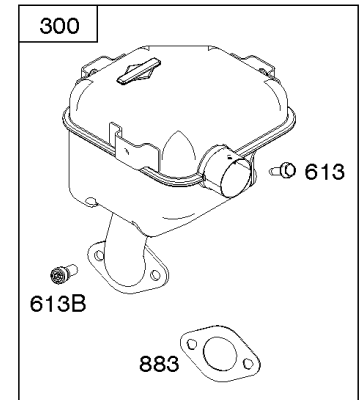
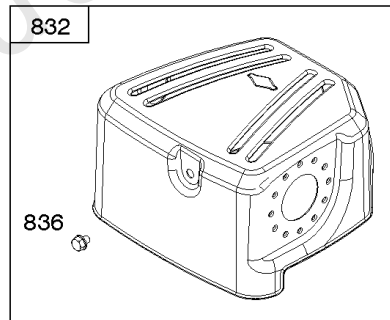
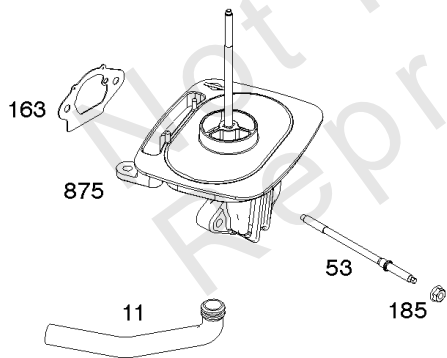
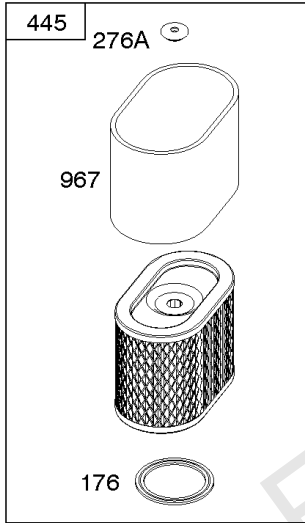
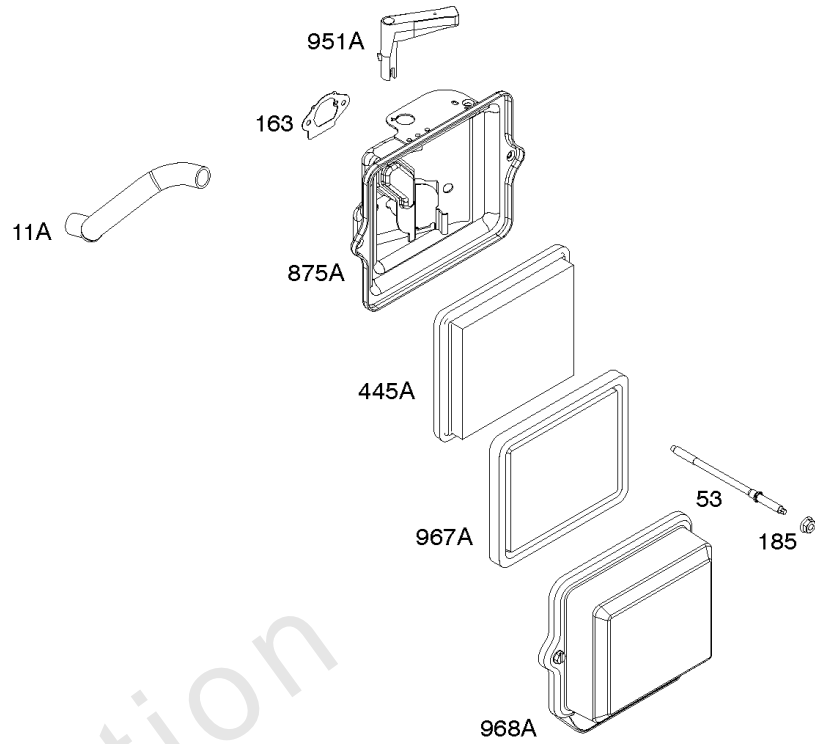
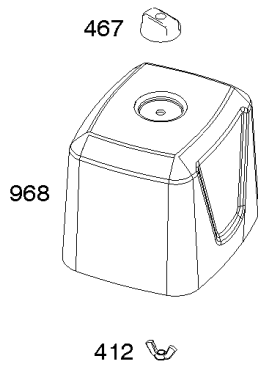


Parts Manual

Mfg. No: 19L232-0315-F1

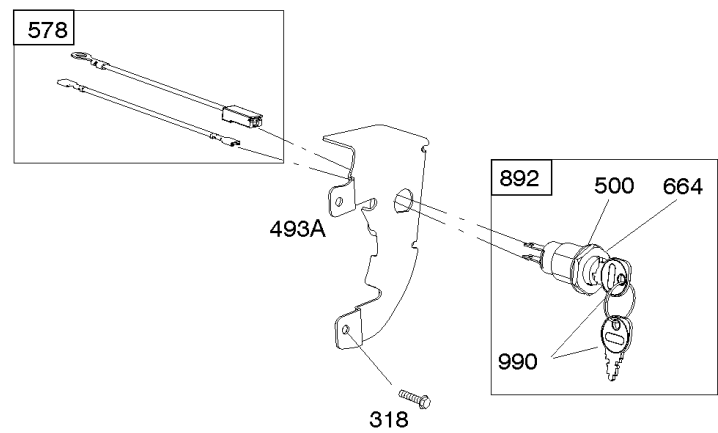
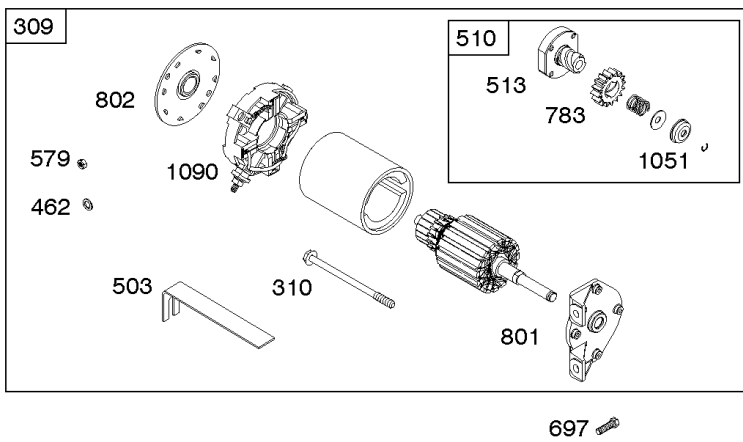
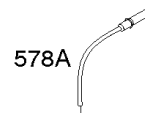
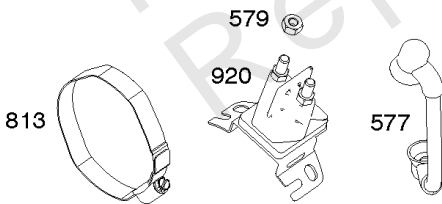
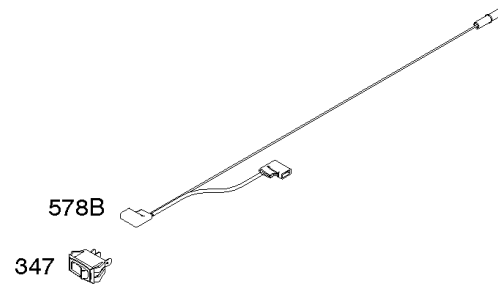
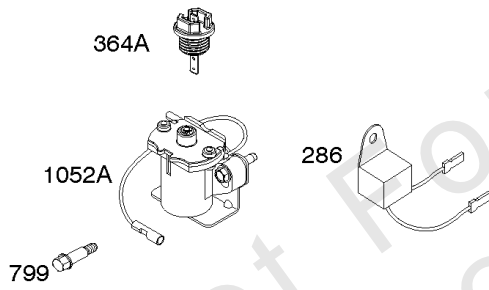
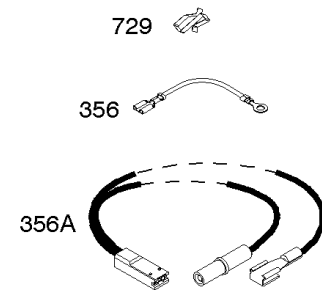
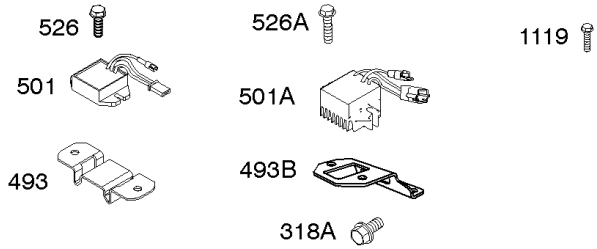
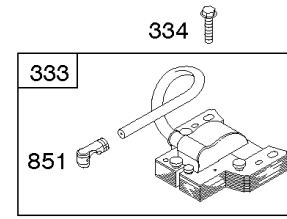
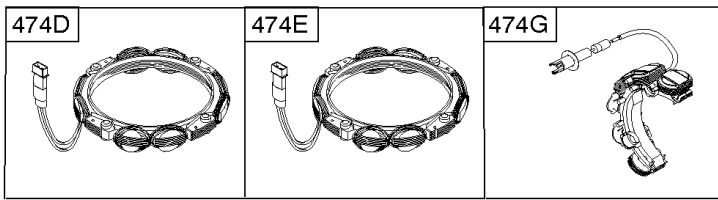
| Model Components | Page |
|--|-------------|
| Air Cleaner, Exhaust. | 4 |
| Alternator, Ignition, Motor-Starter. | 6 |
| Blower Housing/Shrouds, Flywheel, Rewind Starter. | 10 |
| Camshaft, Crankshaft, Cylinder, Piston/Rings/Connecting Rod, Warning Label. | 12 |
| Carburetor Group. | 14 |
| Controls, Fuel Supply, Governor Spring. | 20 |
| Crankcase Cover, Gear Reduction. | 24 |
| Cylinder Head, Gasket Set - Engine, Gasket Set -Valve. | 26 |
| Replacement Engine - Europe, Middle East & Africa. | 28 |
| Replacement Engine - US & Canada. | 29 |

Not For
Reproduction



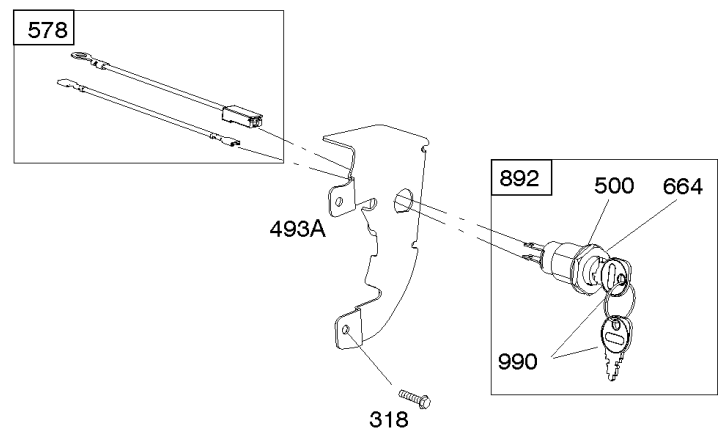
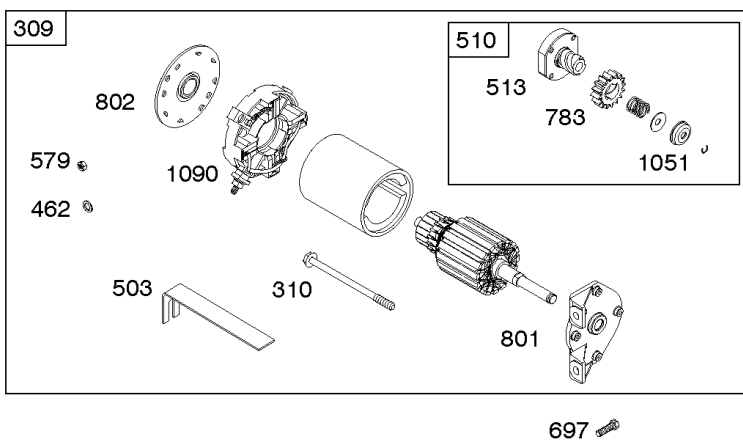
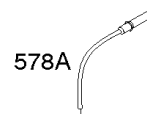
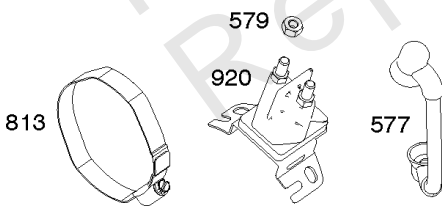
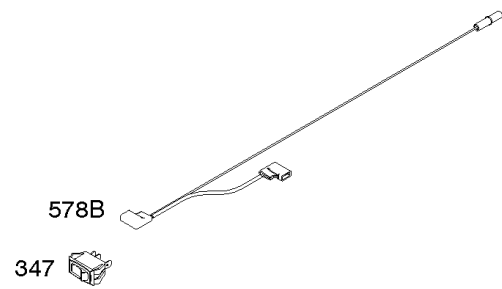
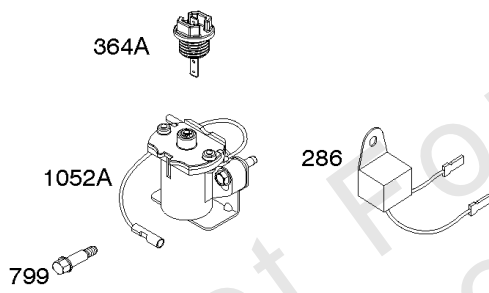
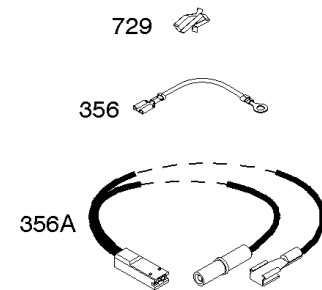
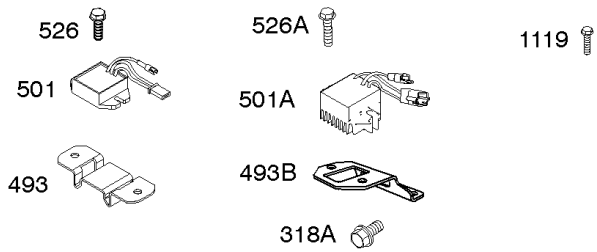
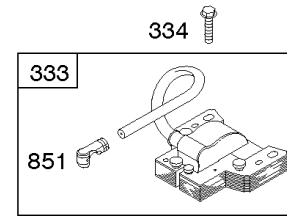
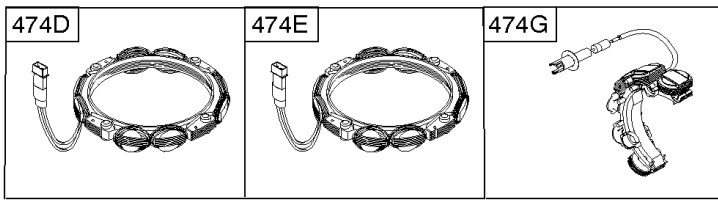
Air Cleaner, Exhaust

| REF NO | PART NO | QTY | DESCRIPTION |
|--------|---------|-----|-------------------------------------|
| 11 | 798964 | | TUBE, Breather |
| 53 | 798988 | | STUD -(Carburetor) |
| 163 | 798962 | | GASKET, Air Cleaner |
| 176 | 798965 | | SEAL, O-Ring -(Air Cleaner Base) |
| 185 | 794838 | | NUT -(Air Cleaner Base) |
| 276A | 798505 | | WASHER, Sealing -(Air Cleaner) |
| 300 | 798967 | | MUFFLER |
| 346 | 794845 | | SCREW -(Spark Arrestor) |
| 412 | 793443 | | NUT -(Air Cleaner Cover) |
| 445 | 797032 | | FILTER, A/C Cartridge |
| 467 | 691985 | | KNOB, Air Cleaner Cover |
| 613 | 794846 | | SCREW -(Muffler) |
| 613B | 794844 | | SCREW -(Muffler) |
| 676 | 796956 | | DEFLECTOR, Muffler |
| 676A | 795336 | | DEFLECTOR, Muffler -(Louvered) |
| 676B | 697816 | | DEFLECTOR, Muffler |
| 677 | 794845 | | SCREW -(Muffler Deflector) |
| 677A | 699776 | | SCREW -(Muffler Deflector) |
| 832 | 799041 | | GUARD, Muffler |
| 836 | 593834 | | SCREW -(Muffler Guard) |
| 875 | 798966 | | BASE, Air Cleaner |
| 883 | 695398 | | GASKET, Exhaust |
| 967 | 798795 | | FILTER, Pre Cleaner |
| 968 | 798963 | | COVER, Air Cleaner |
| 994B | 796399 | | ARRESTOR, Spark |



Alternator, Ignition, Motor-Starter

| REF NO | PART NO | QTY | DESCRIPTION |
|--------|---------|-----|---|
| 286 | 594800 | | MODULE, Oil Sensor -Used After Code Date 15042700 |
| 286 | 798796 | | MODULE, Oil Sensor -Used Before Code Date 15052800 |
| 309 | 695479 | | MOTOR, Starter |
| 310 | 690323 | | SCREW -(Starter Motor) |
| 318 | 691693 | | SCREW -(Mounting Bracket) |
| 318A | 795026 | | SCREW -(Mounting Bracket) |
| 333 | 591459 | | ARMATURE-MAGNETO -Used After Code Date 12042200 |
| 333 | 492341 | | ARMATURE, Magneto -Used Before Code Date 12042300 |
| 334 | 699477 | | SCREW -(Magneto Armature) |
| 356 | 695630 | | WIRE, Stop |
| 356A | 799721 | | WIRE, Stop |
| 364A | 699947 | | TERMINAL, Oil Plug |
| 462 | 691261 | | WASHER -(Starter Cable) |
| 474D | 695466 | | ALTERNATOR -(10 AMP) |
| 474E | 790320 | | ALTERNATOR -(20 Amp) |
| 474G | 695730 | | ALTERNATOR -(3 Amp. DC) |
| 493 | 691177 | | BRACKET, Mounting |
| 493A | 798803 | | BRACKET, Mounting |
| 493B | 699048 | | BRACKET, Mounting |
| 500 | 691086 | | WASHER -(Key Switch) |
| 501 | 797375 | | REGULATOR -(10 and 16 Amp Regulated) |
| 501A | 790325 | | REGULATOR -(20 Amp) |
| 503 | 691532 | | STRAP, Starter |
| 510 | 693699 | | DRIVE, Starter |
| 513 | 692024 | | CLUTCH, Drive |
| 526 | 690297 | | SCREW -(Regulator) (10-16 Amp Regulated) |
| 526A | 690326 | | SCREW -(Regulator) (20 Amp) |
| 577 | 690795 | | CABLE, Starter |
| 578 | 798802 | | WIRE ASSEMBLY |
| 578A | 692306 | | WIRE ASSEMBLY |
| 578B | 590689 | | WIRE ASSEMBLY |
| 579 | 691029 | | NUT -(Starter Cable) |
| 664 | 691087 | | NUT -(Key Switch) |
| 697 | 795026 | | SCREW -(Starter Motor) (Drive Cap) |
| 729 | 799133 | | CLIP, Wire |
| 783 | 693713 | | GEAR, Pinion |
| 799 | 699691 | | SCREW -(Oil Sensor) |



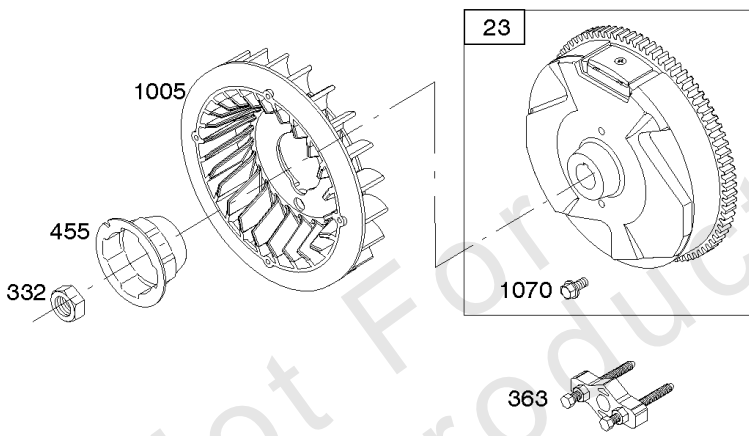
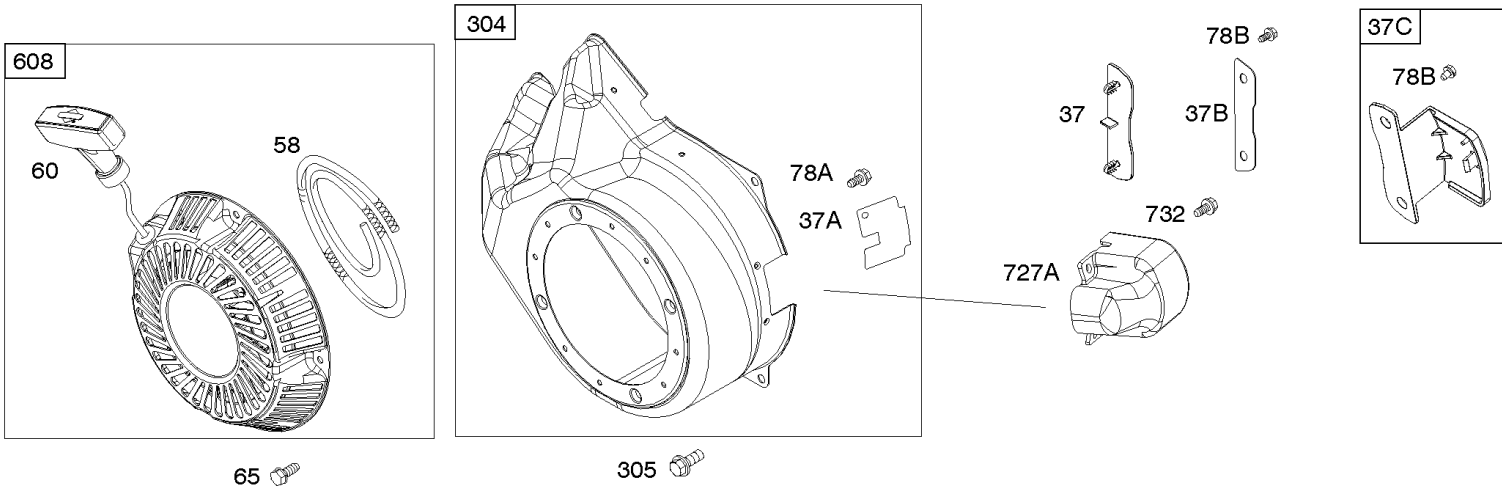
Alternator, Ignition, Motor-Starter

| REF NO | PART NO | QTY | DESCRIPTION |
|--------|---------|-----|--|
| 801 | 694482 | | CAP-DRIVE |
| 802 | 691286 | | CAP, End |
| 813 | 690635 | | CLAMP |
| 851 | 493880S | | TERMINAL-SPARK PLUG |
| 892 | 690646 | | SWITCH, Key |
| 920 | 691656 | | SOLENOID, Starter |
| 990 | 691959 | | SET, Key |
| 1051 | 691265 | | RING, Retaining |
| 1052A | 794805 | | SENSOR, Oil -Used After Code Date 14093000 |
| 1052A | 693805 | | SENSOR, Oil -Used Before Code Date 14100100 |
| 1090 | 691293 | | RETAINER, Brush |
| 1119 | 699772 | | SCREW -(Alternator) |

Not For Reproduction

Blower Housing/Shrouds, Flywheel, Rewind Starter

Mfg. No: 19L232-0315-F1



Not For
Reproduction

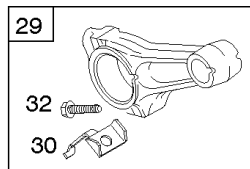
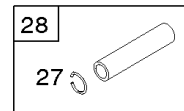
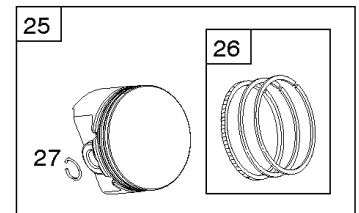
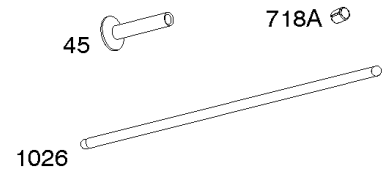
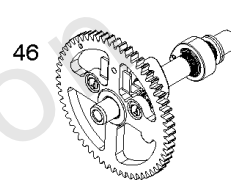
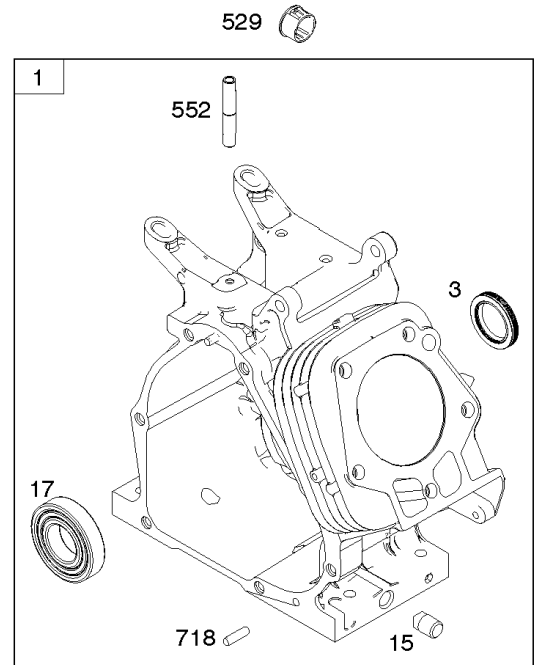
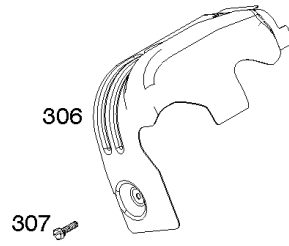
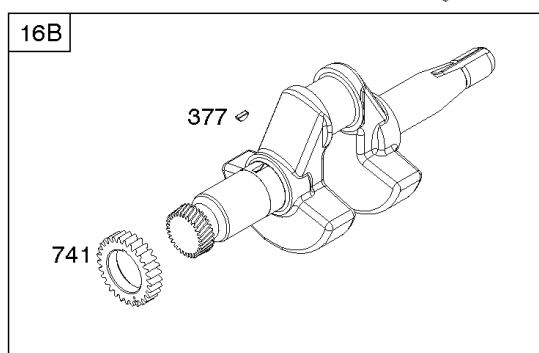
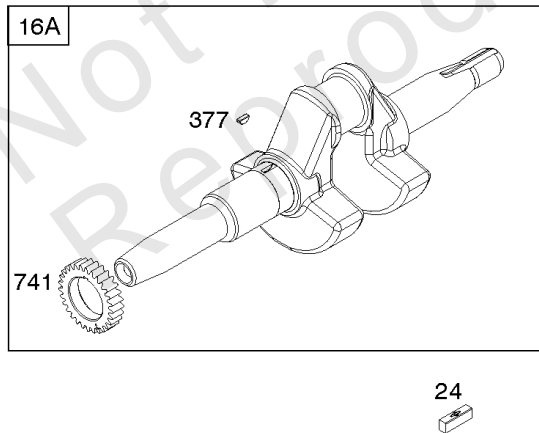
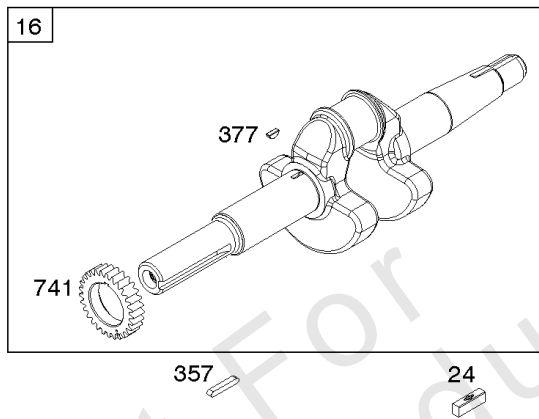
Blower Housing/Shrouds, Flywheel, Rewind Starter

| REF NO | PART NO | QTY | DESCRIPTION |
|--------|---------|-----|--|
| 23 | 794814 | | FLYWHEEL |
| 37 | 795715 | | GUARD, Flywheel -(Snap-on) |
| 37A | 699047 | | GUARD, Flywheel -Used Before Code Date 12080600 |
| 37B | 790730 | | GUARD, Flywheel -Used Before Code Date 12080600 |
| 37C | 591544 | | GUARD, Flywheel -Used After Code Date 12080500 |
| 58 | 66574 | | ROPE, Starter -(Cut To Required Length) |
| 60 | 490652 | | GRIP-STARTER ROPE |
| 65 | 699228 | | SCREW -(Rewind Starter) |
| 78A | 699205 | | SCREW -(Flywheel Guard) |
| 78B | 795026 | | SCREW -(Flywheel Guard) |
| 304 | 798994 | | HOUSING, Blower |
| 305 | 699481 | | SCREW -(Blower Housing) |
| 332 | 794824 | | NUT -(Flywheel) |
| 363 | 19203 | | PULLER, Flywheel |
| 455 | 794867 | | CUP, Flywheel |
| 608 | 798825 | | STARTER, Rewind |
| 727A | 697465 | | COVER, Starter Drive |
| 732 | 699200 | | SCREW -(Starter Drive Cover) |
| 1005 | 794815 | | FAN, Flywheel |
| 1070 | 794821 | | SCREW -(Flywheel Fan) |

Camshaft, Crankshaft, Cylinder, Piston/Rings/Connecting Rod, Warning Label

Mfg. No: 19L232-0315-F1

- 1036 EMISSIONS LABEL
- 1319 WARNING LABEL
- 1319A WARNING LABEL

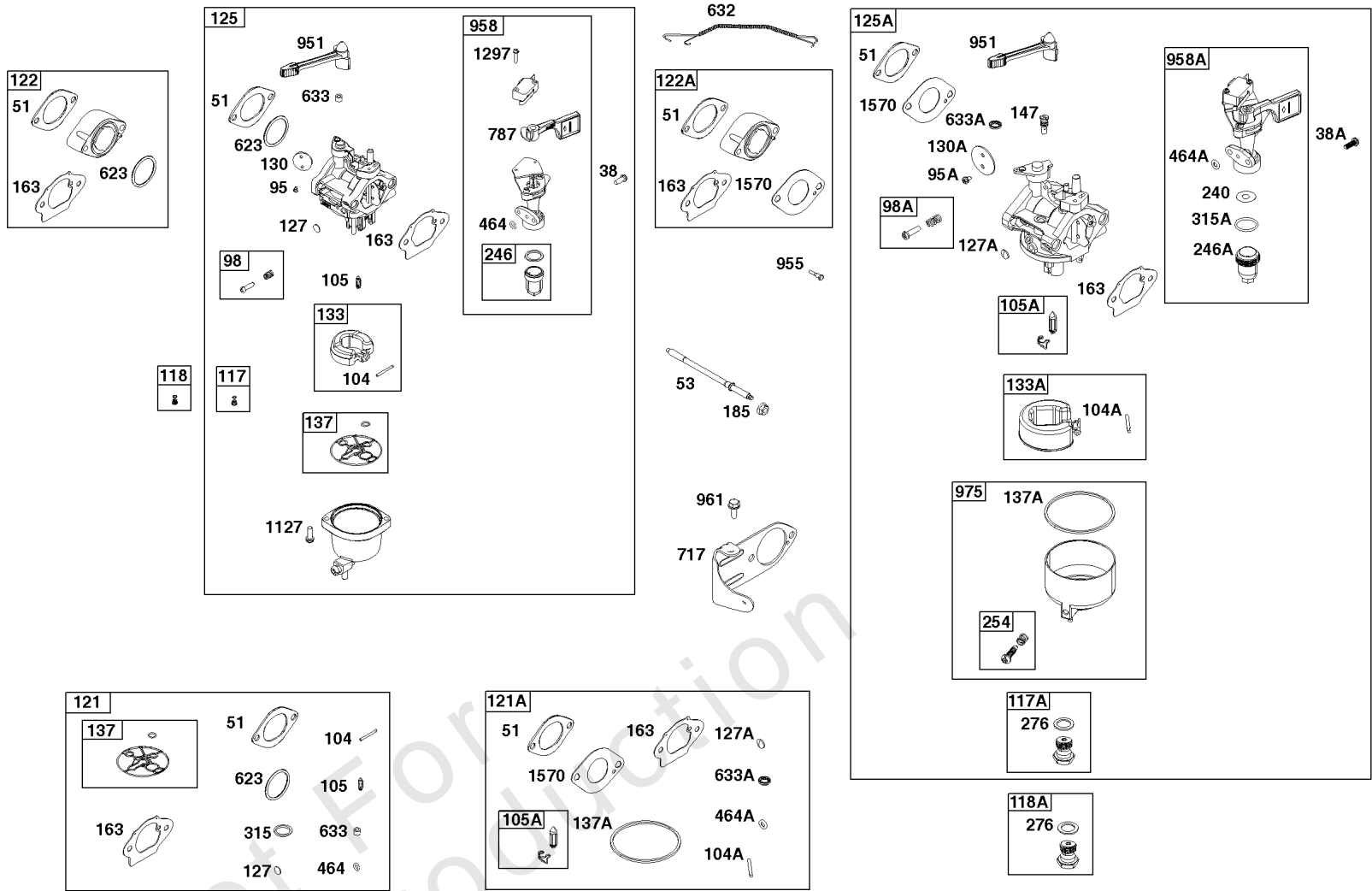


Camshaft, Crankshaft, Cylinder, Piston/Rings/Connecting Rod, Warning Label

| REF NO | PART NO | QTY | DESCRIPTION |
|--------|---------|-----|---|
| 1 | 799046 | | CYLINDER ASSEMBLY |
| 3 | 798991 | | SEAL, Oil -(Magneto Side) |
| 15 | 691686 | | PLUG-OIL DRAIN |
| 16A | 796958 | | CRANKSHAFT |
| 17 | 798993 | | BEARING, Ball |
| 24 | 222698S | | KEY, Flywheel |
| 25 | 792117 | | PISTON ASSEMBLY -(Standard) |
| 25 | 792144 | | PISTON ASSEMBLY -(.020 Oversize) |
| 26 | 792073 | | SET, Ring -(.020" Oversize) |
| 26 | 792026 | | SET, Ring -(Standard) |
| 27 | 690975 | | LOCK, Piston Pin |
| 28 | 696581 | | PIN, Piston -(Standard) |
| 29 | 694691 | | ROD, Connecting |
| 30 | 694692 | | DIPPER, Connecting Rod |
| 32 | 690976 | | SCREW -(Connecting Rod) |
| 45 | 690977 | | TAPPET, Valve |
| 46 | 795697 | | CAMSHAFT |
| 306 | 798992 | | SHIELD, Cylinder |
| 307 | 794822 | | SCREW -(Cylinder Shield) |
| 309 | 695479 | | MOTOR, Starter |
| 357 | 590960 | | KEY, Drive Pulley |
| 357 | 591054 | | KEY, Drive Pulley |
| 377 | 690979 | | KEY, Woodruff -Used After Code Date 11103100 |
| 377 | 798972 | | KEY, Woodruff -Used Before Code Date 11110100 |
| 529 | 791822 | | GROMMET |
| 552 | 694674 | | BUSHING, Governor Crank |
| 718 | 690959 | | PIN, Locating -(Cylinder Head) |
| 718A | 695178 | | PIN, Locating -(Head) |
| 741 | 691288 | | GEAR, Timing |
| 1026 | 592673 | | ROD, Push |
| 1036 | ----- | | LABEL, Emissions -(Available From A Briggs & Stratton Authorized Dealer) |
| 1319 | 794467 | | LABEL, Warning |
| 1319A | 797669 | | LABEL, Warning |

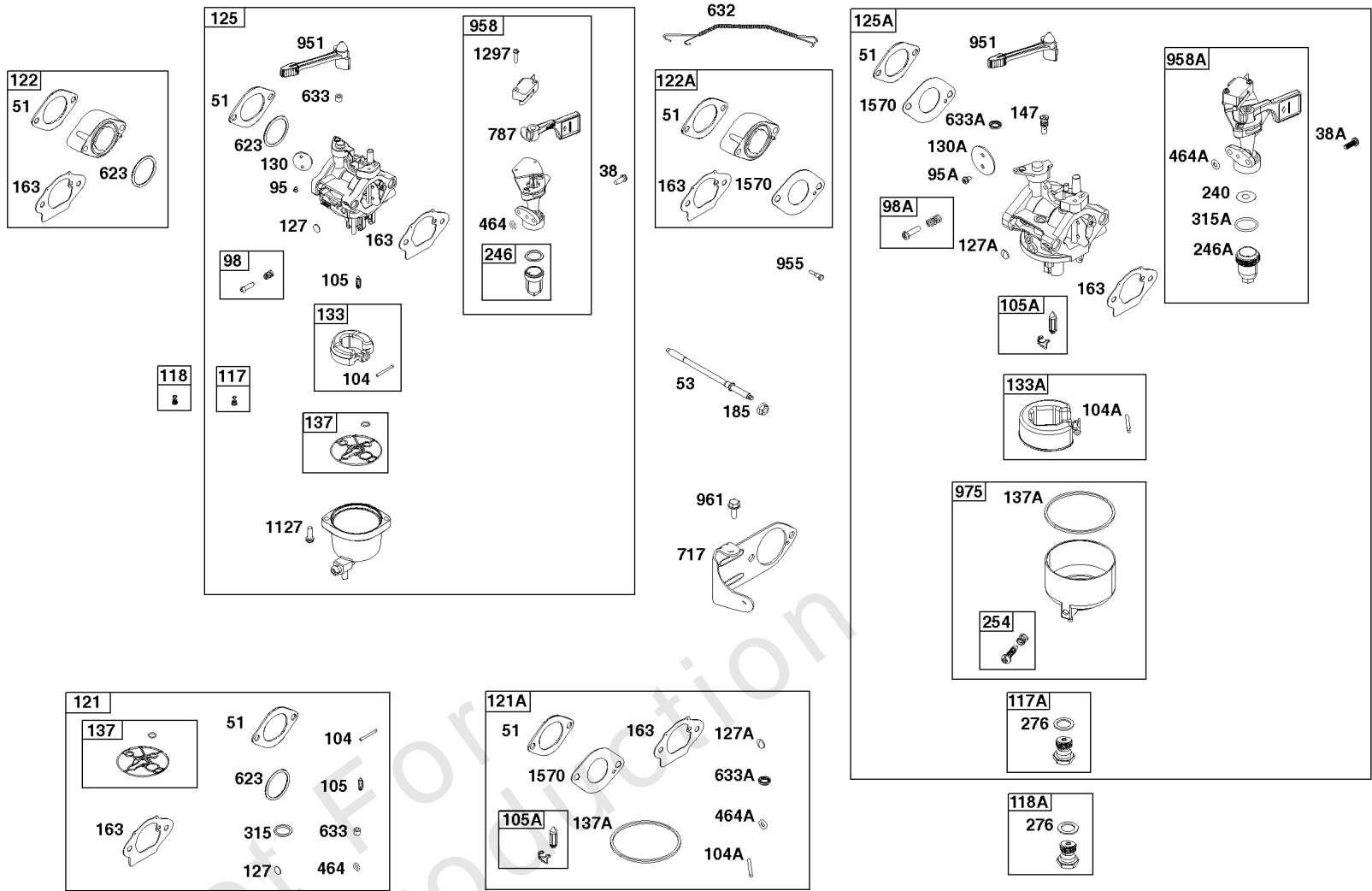
Carburetor Group

| REF NO | PART NO | QTY | DESCRIPTION |
|--------|----------|-----|---|
| 38 | 698557 | 2 | SCREW -(Fuel Shut Off Valve) -Used Before Code Date 18112600 |
| 38A | 595328 | 2 | SCREW -(Fuel Shut Off Valve) -Used After Code Date 18112500 |
| 51 | ----- | 1 | GASKET, Intake -(Part information located in Cylinder Head Group.) |
| 53 | 798988 | 2 | STUD -(Carburetor) |
| 95 | 690718 | 2 | SCREW -(Throttle Valve) -Used Before Code Date 18112600 |
| 95A | 797161 | 2 | SCREW -(Throttle Valve) -Used After Code Date 18112500 |
| 98 | 695408 | 1 | KIT, Idle Speed -Used Before Code Date 18112600 |
| 98A | 847139 | 1 | KIT, Idle Speed -Used After Code Date 18112500 |
| 104 | 694918 | 1 | PIN, Float Hinge -Used Before Code Date 18112600 |
| 104A | 597533 | 1 | PIN, Float Hinge -Used After Code Date 18112500 |
| 105 | 696136 | 1 | VALVE, Float Needle -Used Before Code Date 18112600 |
| 105A | 84004840 | 1 | VALVE, Float Needle -Used After Code Date 18112500 |
| 117 | 698788 | 1 | JET, Main -(Standard) -Used Before Code Date 18112600 |
| 117A | 84004489 | 1 | JET, Main -(Standard) -Used After Code Date 18112500 |
| 118 | 799134 | 1 | JET, Main -(High Altitude) -Used Before Code Date 18112600 |
| 118A | 84004744 | 1 | JET, Main -(High Altitude) -Used After Code Date 18112500 |
| 121 | 799722 | 1 | KIT, Carburetor Overhaul -(Service Kits may include extra parts not specific to this engine.) -Used Before Code Date 18112600 |
| 121A | 84004975 | 1 | KIT, Carburetor Overhaul -(Service Kits may include extra parts not specific to this engine.) -Used After Code Date 18112500 |
| 122 | 799766 | 1 | SPACER, Carburetor -Used Before Code Date 18112600 |
| 122A | 84004776 | 1 | SPACER, Carburetor -Used After Code Date 17112000 |
| 125 | 799060 | 1 | CARBURETOR -Used Before Code Date 18112600 |
| 125A | 84003204 | 1 | CARBURETOR -Used After Code Date 18112500 |
| 127 | 690727 | 1 | PLUG, Welch -Used Before Code Date 18112600 |
| 127A | 84004841 | 1 | PLUG, Welch -Used After Code Date 18112500 |
| 130 | 696139 | 1 | VALVE, Throttle -Used Before Code Date 18112600 |
| 130A | 84004397 | 1 | VALVE, Throttle -Used After Code Date 18112500 |



Carburetor Group

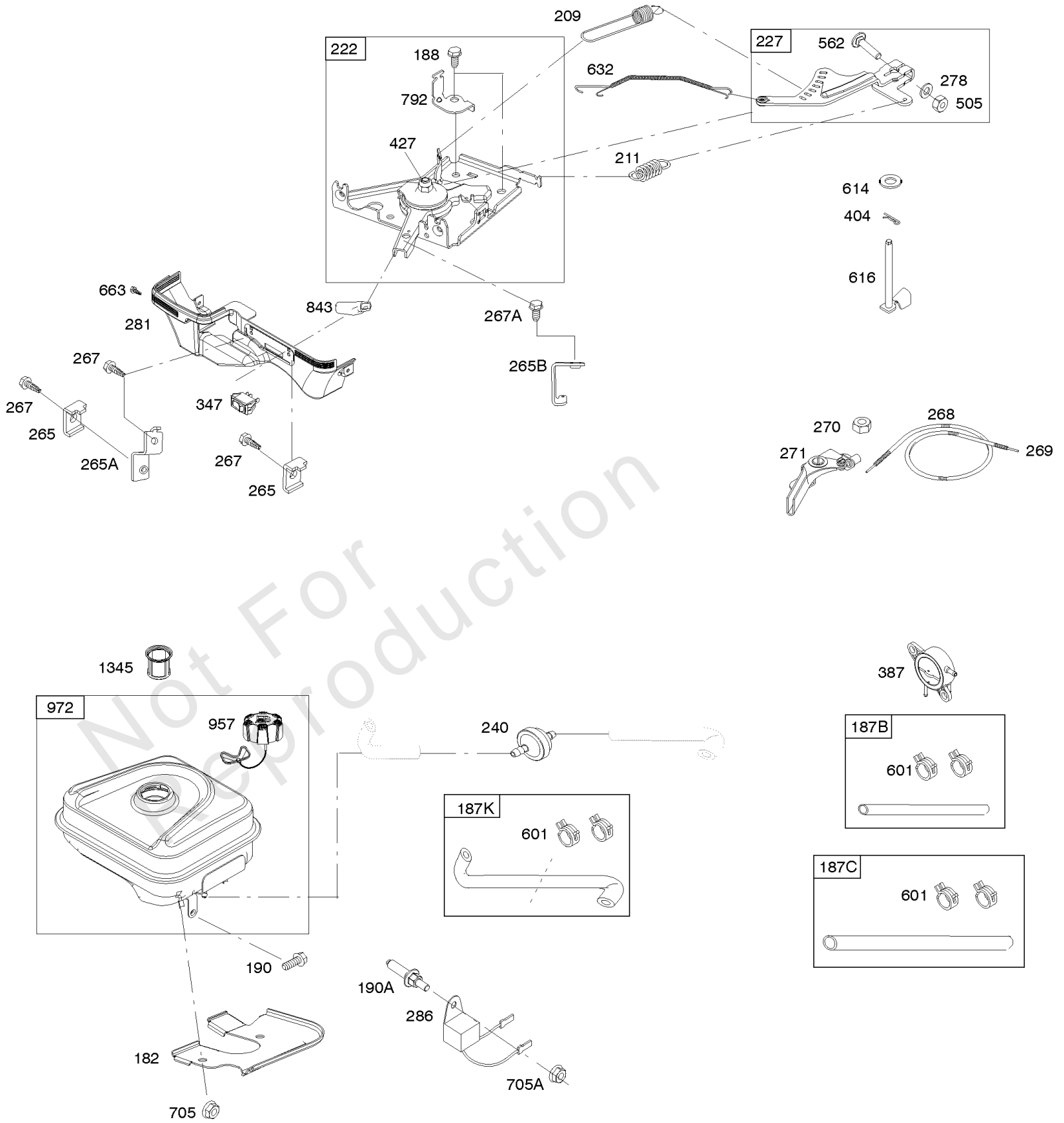
| REF NO | PART NO | QTY | DESCRIPTION |
|--------|----------|-----|--|
| 133 | 694914 | 1 | FLOAT, Carburetor -Used Before Code Date 18112600 |
| 133A | 84004490 | 1 | FLOAT, Carburetor -Used After Code Date 18112500 |
| 137 | 799991 | 1 | GASKET, Float Bowl -Used Before Code Date 18112600 |
| 137A | 84004205 | 1 | GASKET, Float Bowl -Used After Code Date 18112500 |
| 147 | 594872 | 1 | JET, Pilot -Used After Code Date 18112500 |
| 163 | 798962 | 1 | GASKET, Air Cleaner |
| 185 | ----- | 2 | NUT -(Part information located in Air Cleaner Group.) |
| 240 | 597039 | 1 | FILTER, Fuel -Used After Code Date 18112500 |
| 246 | 595153 | 1 | BOWL-FUEL VALVE-STRAINER -Used Before Code Date 18112600 |
| 246A | 597043 | 1 | BOWL, Fuel Filter -Used After Code Date 18112500 |
| 254 | 595322 | 1 | DRAIN, Carburetor Bowl -Used After Code Date 18112500 |
| 276 | 84004488 | 1 | WASHER, Sealing -Used After Code Date 18112500 |
| 315 | 799035 | 1 | SEAL, O-Ring -(Fuel Filter Bowl) -Used Before Code Date 18112600 |
| 315A | 597735 | 1 | GASKET, Fuel Bowl -(Fuel Filter Bowl) -Used After Code Date 18112500 |
| 464 | 698550 | 1 | SEAL, O-Ring -(Fuel Shut-off Valve) -Used Before Code Date 18112600 |
| 464A | 595320 | 1 | SEAL, O-Ring -(Fuel Shut-off Valve) -Used After Code Date 18112500 |
| 623 | 799051 | 1 | SEAL, O-Ring -(Carburetor Spacer) -Used Before Code Date 18112600 |
| 632 | ----- | 1 | SPRING/LINK, Mechanical Governor -(Part information located in Controls Group.) |
| 633 | 690722 | 1 | SEAL, Choke/Throttle Shaft -Used Before Code Date 18112600 |
| 633A | 84004398 | 1 | SEAL, Choke/Throttle Shaft -Used After Code Date 18112500 |
| 717 | 798989 | 1 | BRACKET, Air Cleaner -Used Before Code Date 18112600 |
| 717 | 84004868 | 1 | BRACKET, Air Cleaner -Used After Code Date 18112500 |
| 787 | 798635 | 1 | ARM, Lever -Used Before Code Date 18112600 |
| 951 | 798528 | 1 | LEVER, Choke |
| 955 | 595329 | 1 | PLUG, Carburetor -Used After Code Date 18112500 |
| 958 | 799073 | 1 | VALVE, Fuel Shut Off -Used Before Code Date 18112600 |
| 958A | 84004839 | 1 | VALVE, Fuel Shut Off -Used After Code Date 18112500 |
| 961 | 699691 | 1 | SCREW -(Air Cleaner Bracket) |
| 975 | 84004204 | 1 | BOWL, Float -Used After Code Date 18112500 |



Carburetor Group

| REF NO | PART NO | QTY | DESCRIPTION |
|--------|----------|-----|--|
| 1127 | 695407 | 2 | SCREW -(Float Bowl to Carburetor Body) -Used Before Code Date 18112600 |
| 1297 | 798637 | 2 | SCREW -Used Before Code Date 18112600 |
| 1570 | 84005011 | 1 | GASKET, Spacer -Used After Code Date 17112000 |

Not For Reproduction



Controls, Fuel Supply, Governor Spring

| REF NO | PART NO | QTY | DESCRIPTION |
|--------|---------|-----|---|
| 182 | 799735 | | BRACKET, Fuel Tank |
| 187B | 791766 | | LINE, Fuel -(15 Inches Long)(Cut to Required Length) |
| 187C | 791745 | | LINE, Fuel -(23 Inches)(Cut To Required Length) |
| 187K | 799059 | | LINE, Fuel -(Formed)(Cut To Required Length) |
| 188 | 699479 | | SCREW -(Control Bracket) |
| 190 | 798496 | | SCREW -(Fuel Tank) |
| 190A | 799725 | | SCREW -(Fuel Tank) (Used with Oil Sensor Module) |
| 209 | 798959 | | SPRING, Governor |
| 211 | 798960 | | SPRING, Governed Idle |
| 222 | 798478 | | BRACKET, Control |
| 227 | 799049 | | LEVER, Governor Control |
| 240 | 394358S | | FILTER, Fuel |
| 265 | 691024 | | CLAMP, Casing |
| 265A | 591740 | | CLAMP, Casing |
| 265B | 591741 | | CLAMP, Casing |
| 267 | 699492 | | SCREW -(Casing Clamp) |
| 267A | 699228 | | SCREW -(Casing Clamp) |
| 268 | 691025 | | CASING, Control Wire -(Cut To Required Length) |
| 269 | 691026 | | WIRE, Control -(Cut To Required Length) |
| 270 | 691027 | | NUT -(Control Wire Casing) |
| 271 | 691028 | | LEVER, Control |
| 278 | 798196 | | WASHER -(Governor Control Lever) |
| 281 | 798961 | | PANEL, Control |
| 286 | 594800 | | MODULE, Oil Sensor -Used After Code Date 15042700 |
| 286 | 798796 | | MODULE, Oil Sensor -Used Before Code Date 15052800 |
| 387 | 808656 | | PUMP, Fuel |
| 404 | 795759 | | WASHER -(Governor Crank) |
| 427 | 798458 | | NUT -(Control Bracket) |
| 505 | 793515 | | NUT -(Governor Control Lever) |
| 562 | 798197 | | BOLT -(Governor Control Lever) |
| 601 | 791850 | | CLAMP, Hose |
| 614 | 691620 | | PIN, Cotter -(Governor Crank) |
| 616 | 795758 | | CRANK, Governor |
| 632 | 799083 | | SPRING/LINK, Mechanical Governor |
| 663 | 699492 | | SCREW -(Control Panel) |
| 705 | 690941 | | NUT -(Fuel Tank) |

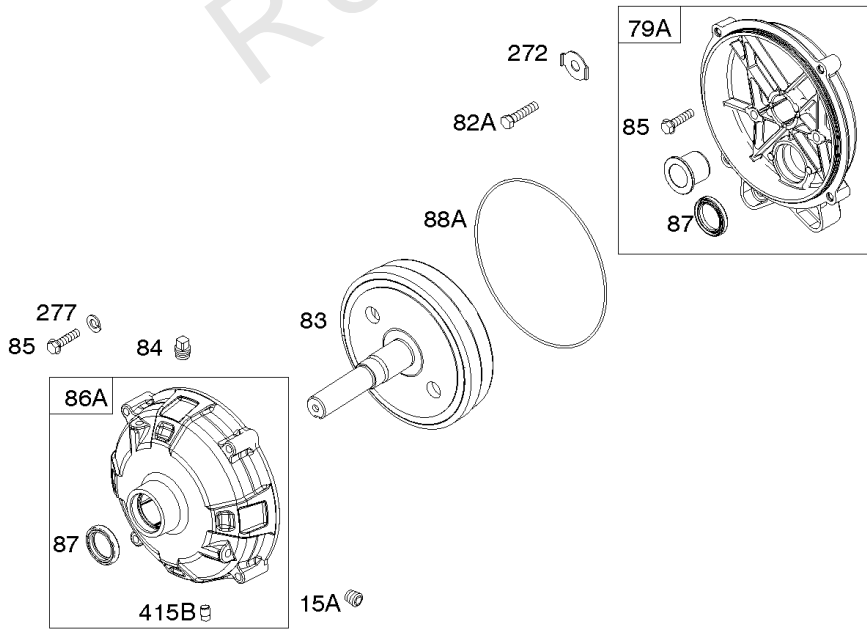
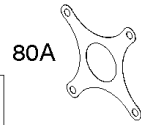
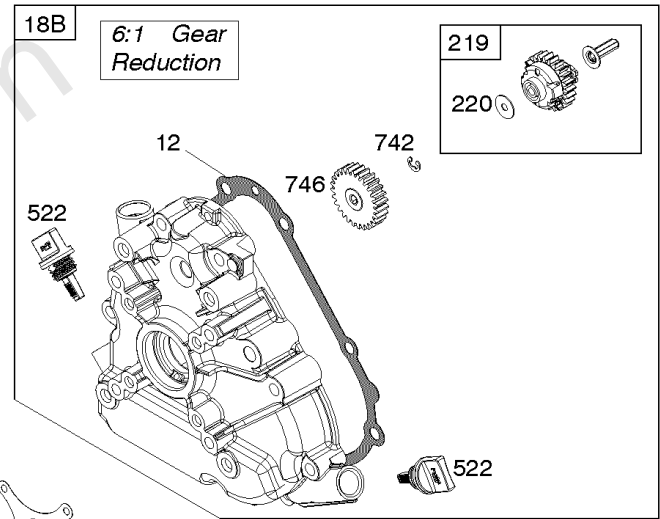
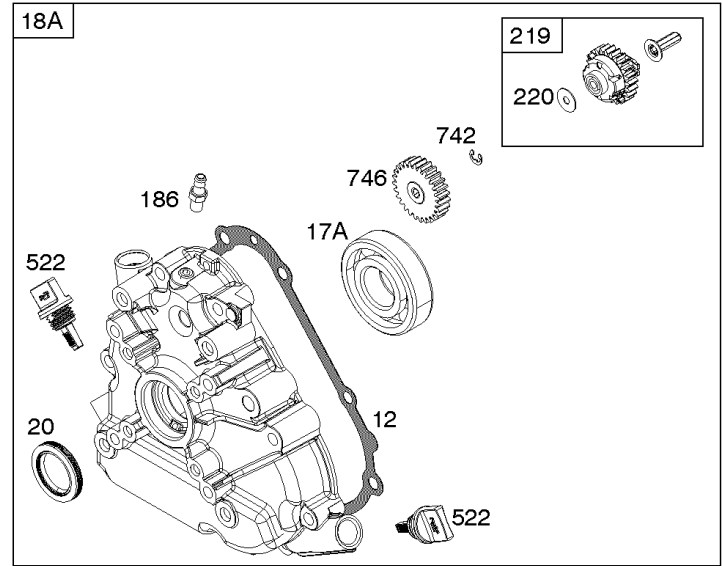
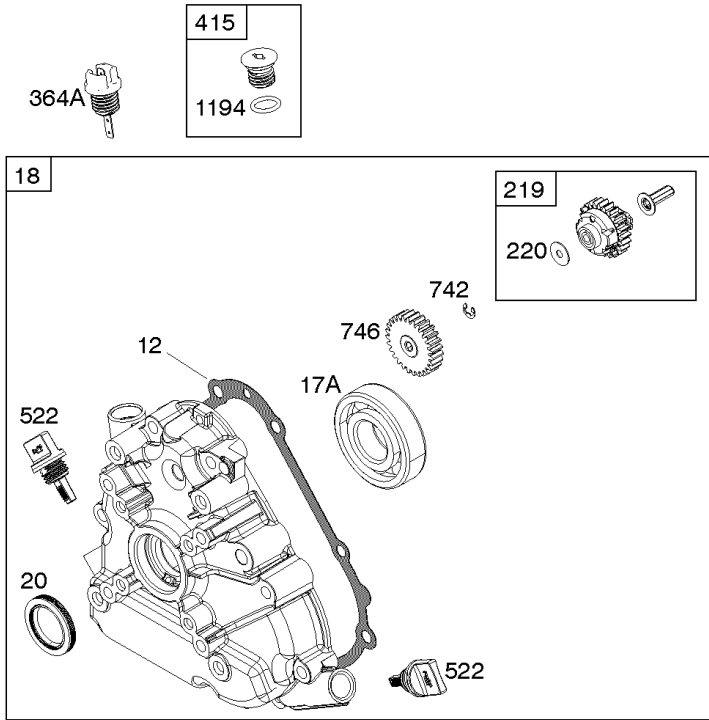
Controls, Fuel Supply, Governor Spring

| REF NO | PART NO | QTY | DESCRIPTION |
|---------------|----------------|------------|---|
| 705A | 794838 | | NUT -(Fuel Tank) (Used with Oil Sensor Module) |
| 792 | 798550 | | BRACKET, Fixed Speed |
| 843 | 695588 | | SLEEVE, Lever |
| 957 | 799324 | | CAP, Fuel Tank |
| 972 | 799986 | | TANK, Fuel |
| 1345 | 792917 | | FILTER, Filler Neck |

Not For Reproduction

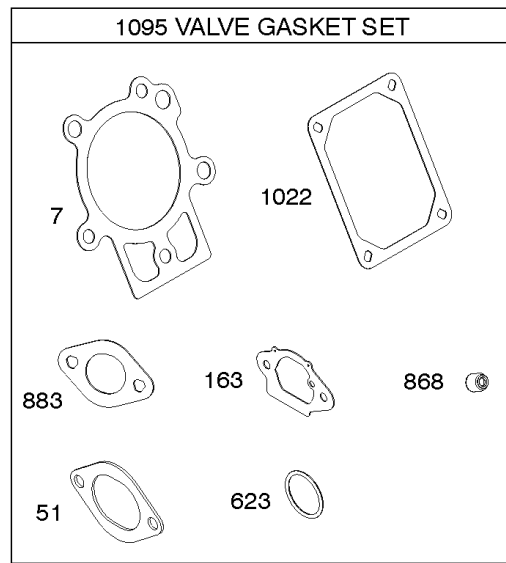
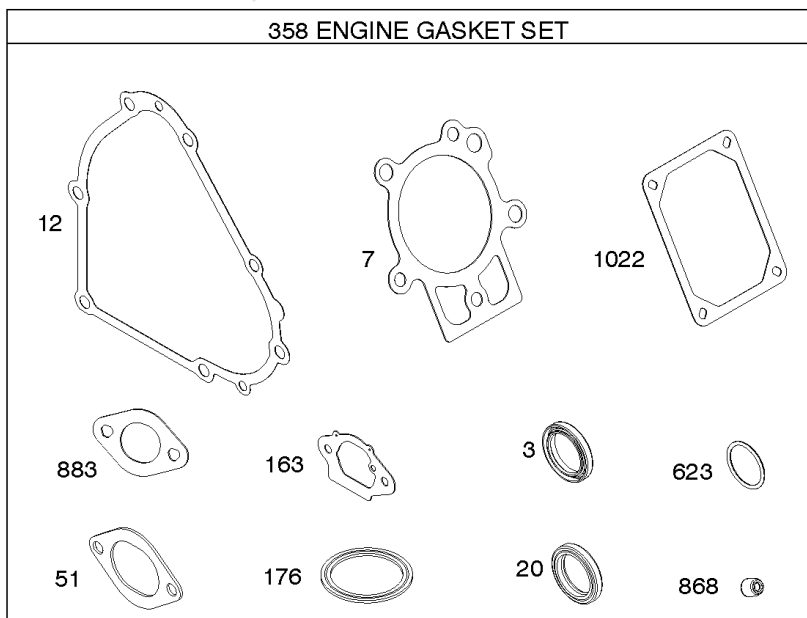
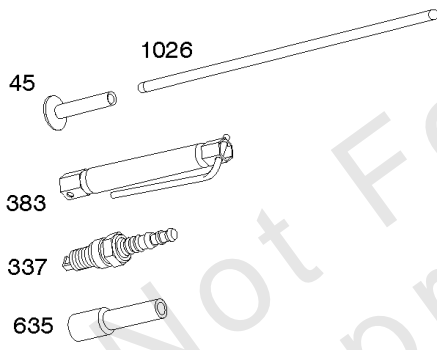
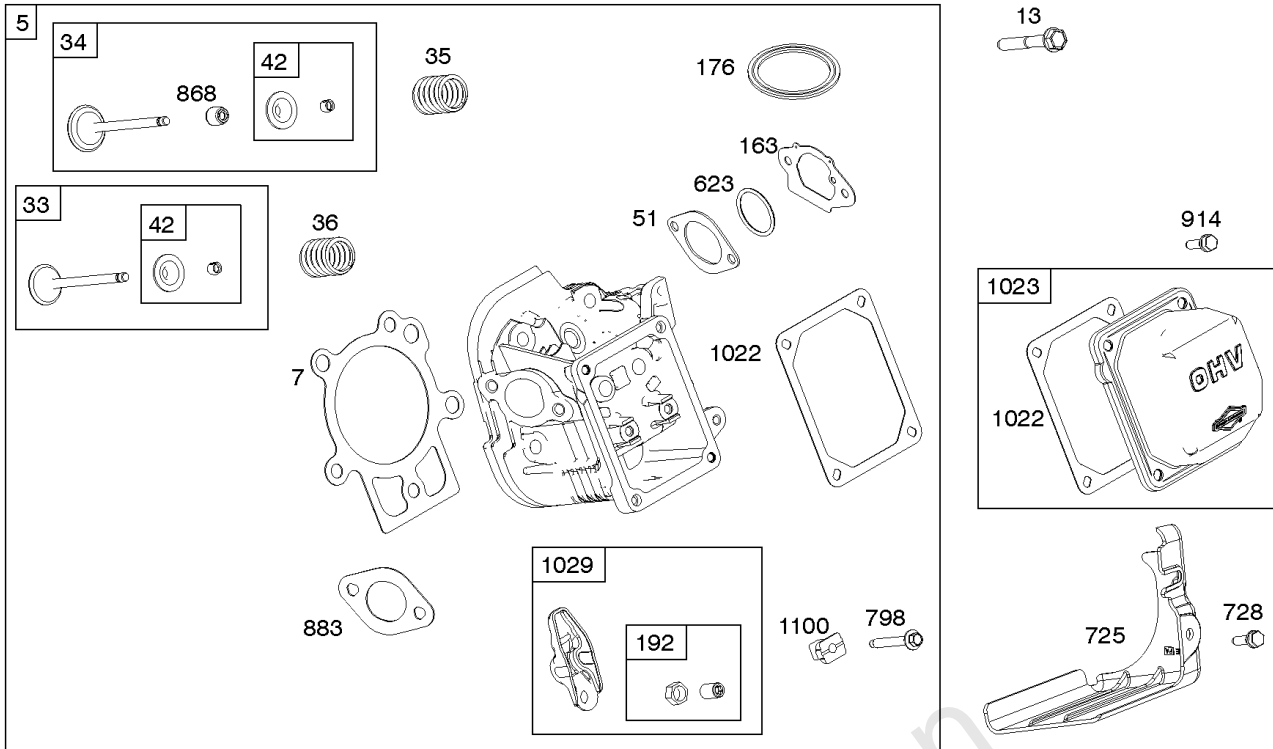
Crankcase Cover, Gear Reduction

Mfg. No: 19L232-0315-F1



Crankcase Cover, Gear Reduction

| REF NO | PART NO | QTY | DESCRIPTION |
|--------|---------|-----|--|
| 12 | 798807 | | GASKET, Crankcase |
| 15A | 691682 | | PLUG-OIL DRAIN |
| 17A | 798995 | | BEARING, Ball |
| 18 | 799084 | | COVER, Crankcase |
| 20 | 798991 | | SEAL, Oil -(PTO Side) |
| 22 | 798955 | | SCREW -(Crankcase Cover/Sump) |
| 79A | 794816 | | CASE, Gear Reduction |
| 80A | 793588 | | GASKET, Gear Case |
| 82A | 594700 | | SCREW -(Gear Reduction Case) |
| 83 | 690387 | | SHAFT, Auxiliary Drive |
| 84 | 691121 | | PLUG-BREATHER |
| 85 | 794820 | | SCREW -(Gear Cover) |
| 86A | 793591 | | COVER, Gear |
| 87 | 391086S | | SEAL, Oil |
| 88A | 793589 | | GASKET, Gear Cover/Housing |
| 170 | 794833 | | STUD -(Crankcase Cover/Sump) |
| 186 | 691764 | | CONNECTOR-HOSE -(Pulse Line) |
| 219 | 693578 | | GEAR, Governor |
| 220 | 691724 | | WASHER -(Governor Gear) |
| 272 | 691168 | | LOCK, Screw Head |
| 277 | 794842 | | WASHER -(Gear Case To Gear Reduction) |
| 364A | 699947 | | TERMINAL, Oil Plug |
| 415 | 691363 | | PLUG |
| 415B | 794903 | | PLUG |
| 522 | 798503 | | PLUG, Dipstick/Fill |
| 742 | 692564 | | RETAINER, E Ring |
| 746 | 694679 | | GEAR, Idler |
| 1194 | 691876 | | SEAL, O-Ring -(Plug) |



Cylinder Head, Gasket Set - Engine, Gasket Set -Valve

| REF NO | PART NO | QTY | DESCRIPTION |
|--------|---------|-----|--|
| 3 | 798991 | | SEAL, Oil -(Magneto Side) |
| 5 | 799858 | | HEAD, Cylinder |
| 7 | 694872 | | GASKET, Cylinder Head |
| 12 | 798807 | | GASKET, Crankcase |
| 13 | 794829 | | SCREW -(Cylinder Head) |
| 20 | 798991 | | SEAL, Oil -(PTO Side) |
| 33 | 697576 | | VALVE, Exhaust |
| 34 | 792200 | | VALVE, Intake |
| 35 | 694865 | | SPRING, Valve -(Intake) |
| 36 | 694865 | | SPRING, Valve -(Exhaust) |
| 42 | 499586 | | KEEPER, Valve |
| 45 | 690977 | | TAPPET, Valve |
| 51 | 590396 | | GASKET, Intake |
| 163 | 798962 | | GASKET, Air Cleaner |
| 176 | 798965 | | SEAL, O-Ring -(Air Cleaner Base) |
| 192 | 690083 | | ADJUSTER, Rocker Arm |
| 337 | 792015 | | PLUG, Spark |
| 358 | 798800 | | GASKET SET, Engine |
| 383 | 19576S | | WRENCH, Spark Plug |
| 623 | 799051 | | SEAL, O-Ring -(Carburetor Spacer) (Air Cleaner Elbow To Carburetor) |
| 635 | 691909 | | BOOT, Spark Plug |
| 725 | 590347 | | SHIELD, Heat |
| 728 | 699481 | | SCREW -(Heat Shield) |
| 798 | 697890 | | SCREW -(Rocker Arm) |
| 868 | 690968 | | SEAL, Valve |
| 883 | 695398 | | GASKET, Exhaust |
| 914 | 794827 | | SCREW -(Rocker Cover) |
| 1022 | 690971 | | GASKET, Rocker Cover |
| 1023 | 697691 | | COVER, Rocker |
| 1026 | 592673 | | ROD, Push |
| 1029 | 690972 | | ARM, Rocker |
| 1095 | 798801 | | GASKET SET, Valve |
| 1100 | 791959 | | PIVOT, Rocker Arm |

Replacement Engine - Europe, Middle East & Africa

| REF NO | PART NO | QTY | DESCRIPTION |
|--------|--------------------|-----|--|
| | 19L2320315F1AX7001 | | Replacement Engine |
| | ----- | | Top No-Load Speed: 3150 |
| | ----- | | Service Note: CHECK NEW ENGINE DIMENSIONS WILL FIT EQUIPMENT |
| | ----- | | Service Note: GENERATOR SPECIFICATION 50HZ |
| | ----- | | Service Note: 3.6L FUEL TANK |

Not For Reproduction

Replacement Engine - US & Canada

| REF NO | PART NO | QTY | DESCRIPTION |
|--------|------------|-----|--|
| | 19L2320036 | 1 | Replacement Engine |
| | 796958 | 1 | CRANKSHAFT -Add Part |
| | 590368 | 1 | CRANKSHAFT -Remove Part |
| ----- | | | Top No-Load Speed: 3150 -Trim: ALL |
| ----- | | | Service Note: For all Go-Karts use only a Model 136200 series engine as a replacement, regardless of the original Model. |
| ----- | | | Service Note: Transfer Governor Spring to replacement engine. |

Not For Reproduction

WANGUARD[®]

COMMERCIAL POWER



BRIGGS & STRATTON[®]